



# Urotensin II Polyclonal Antibody

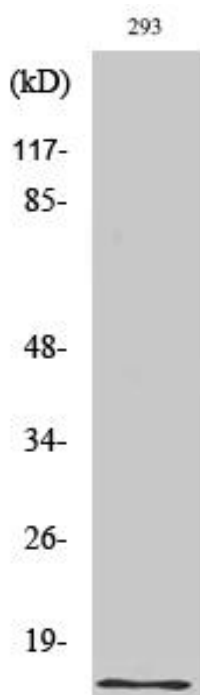
<b>Catalog No</b>	YP-Ab-15977
<b>Isotype</b>	IgG
<b>Reactivity</b>	Human;Monkey
<b>Applications</b>	WB;ELISA
<b>Gene Name</b>	UTS2
<b>Protein Name</b>	Urotensin-2
<b>Immunogen</b>	The antiserum was produced against synthesized peptide derived from human Urotensin II. AA range:48-97
<b>Specificity</b>	Urotensin II Polyclonal Antibody detects endogenous levels of Urotensin II protein.
<b>Formulation</b>	Liquid in PBS containing 50% glycerol, 0.5% BSA and 0.02% sodium azide.
<b>Source</b>	Polyclonal, Rabbit,IgG
<b>Purification</b>	The antibody was affinity-purified from rabbit antiserum by affinity-chromatography using epitope-specific immunogen.
<b>Dilution</b>	Western Blot: 1/500 - 1/2000. ELISA: 1/10000. Not yet tested in other applications.
<b>Concentration</b>	1 mg/ml
<b>Purity</b>	≥90%
<b>Storage Stability</b>	-20°C/1 year
<b>Synonyms</b>	UTS2; Urotensin-2; Urotensin II; U-II; UII
<b>Observed Band</b>	14kD
<b>Cell Pathway</b>	Secreted.
<b>Tissue Specificity</b>	Brain specific.
<b>Function</b>	function:Highly potent vasoconstrictor.,similarity:Belongs to the urotensin-2 family.,tissue specificity:Brain specific.,
<b>Background</b>	This gene encodes a mature peptide that is an active cyclic heptapeptide absolutely conserved from lamprey to human. The active peptide acts as a vasoconstrictor and is expressed only in brain tissue. Despite the gene family name similarity, this gene is not homologous to urocortin, a member of the sauvagine/corticotropin-releasing factor/urotensin I family. Most of the proprotein is cleaved to make the mature peptide. Transcript variants encoding different preprotein isoforms have been described for this gene. [provided by RefSeq, Jul 2008],
<b>matters needing attention</b>	Avoid repeated freezing and thawing!



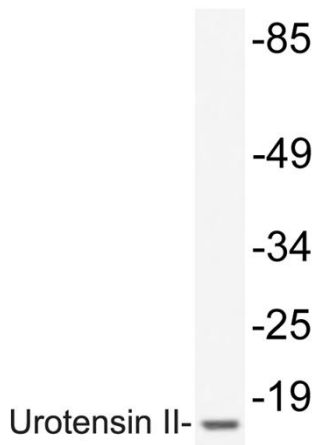
### Usage suggestions

This product can be used in immunological reaction related experiments. For more information, please consult technical personnel.

## Products Images



Western blot analysis of various cells using Urotensin II Polyclonal Antibody. Secondary antibody(catalog#:RS0002) was diluted at 1:20000



Western blot analysis of lysate from 293 cells, using Urotensin II antibody.